

Plan the Bruce: Agriculture

Brockton Council
May 25, 2021



Outline

- Where we are on the journey to a new County Official Plan
- Agriculture in Bruce County
- Directions under discussion
- Engagement
- Next Steps

We are here



Recommended Policy Directions

Each project's Interim Report provides information and questions for consideration, and is a starting point for community input on policy.



Community Conversations

Each project sparks dialogue and engagement with the community, seeking input on policy direction.



Discussion Papers

Each project's Discussion Paper — built from the Interim Report and results of community engagement — are to be endorsed by Bruce County Council and will serve as the foundation for policy in the Official Plan.



Develop Draft Official Plan



Community Conversations



Revised Draft Official Plan



Bruce County Council Adopts New Official Plan



Province of Ontario Approves New Official Plan

AGRICULTURE

Good planning decisions now will help us support local food producers and expand their opportunities beyond our borders to create markets for a thriving, healthy agricultural community.



Planning for Agriculture Now and in the Future

Bruce County is home to a large, prosperous, diverse and expanding agriculture sector, with a high concentration of livestock operations.

And agriculture is dynamic with change — a constant fact of life for the farming community.

To plan for the health of agriculture in Bruce County for the next 25 years, we're planning now.



7 Key Topics, 14 Recommended Directions



**PRIME AGRICULTURAL
AREA MAPPING**



**INDUSTRIAL AND
COMMERCIAL USES ON FARMS**



**MINIMUM SIZE FOR NEW
AGRICULTURAL LOTS**



**URBAN-AGRICULTURE
EDGE PLANNING**



**SURPLUS FARM
DWELLING SEVERANCES**



CANNABIS PRODUCTION



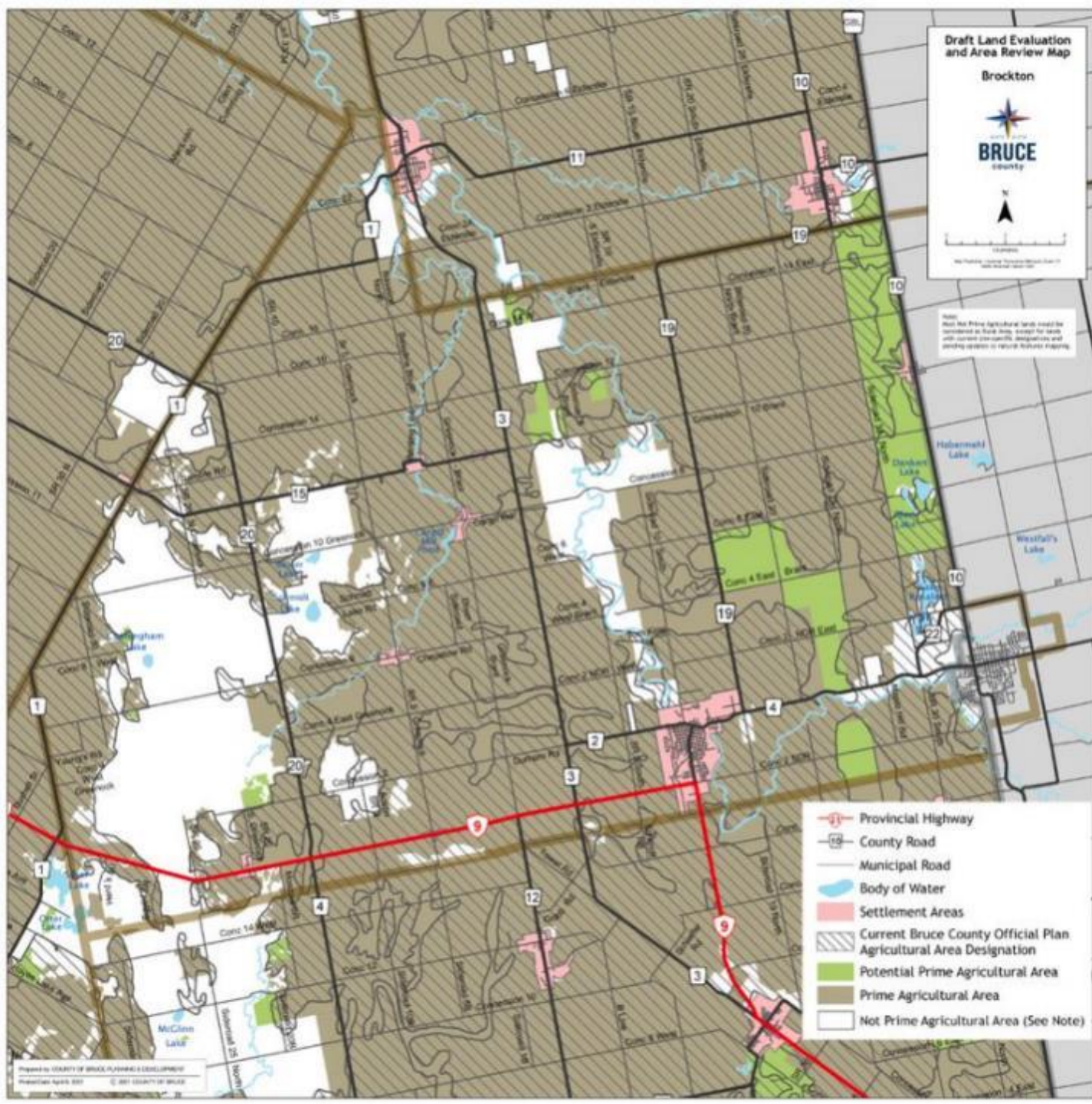
**NEW RESIDENTIAL
LOTS IN WOODLOTS**



**PRIME AGRICULTURAL
AREA MAPPING**

Consult community
for input on
Prime Agricultural Areas
and
Potential Prime
Agricultural Areas.

Draft Land Evaluation and Area Review Map



Prime Agricultural Areas are identified to make sure that agriculture is protected from uses that would conflict with farming over the long term.

Protecting our resources and uses for the long run helps farmers, and the businesses that rely on them, to:

- Plan for family or business succession.
- Plan investments and improvements.
- Adapt to innovations and opportunities.
- Reduce or avoid nuisance complaints.



A **Prime Agricultural Area** is based in part on the Canada Land Inventory. The Canada Land Inventory (CLI) created a system for mapping soil capability for agriculture into classes. The classes are on a scale from 1 to 7 with 1 being the best soil for farming. A Prime Agricultural Area is an area where prime agricultural lands predominate and includes:

Areas where CLI identified class 1-3 soils
and
associated lands with class 4-7 soils



Additional areas where there is a local concentration of farms that show characteristics of ongoing agriculture.



For the purposes of this project, **Potential Prime Agricultural Areas** are areas where further review and comment is warranted to confirm whether they meet the definition of a Prime Agricultural Area.

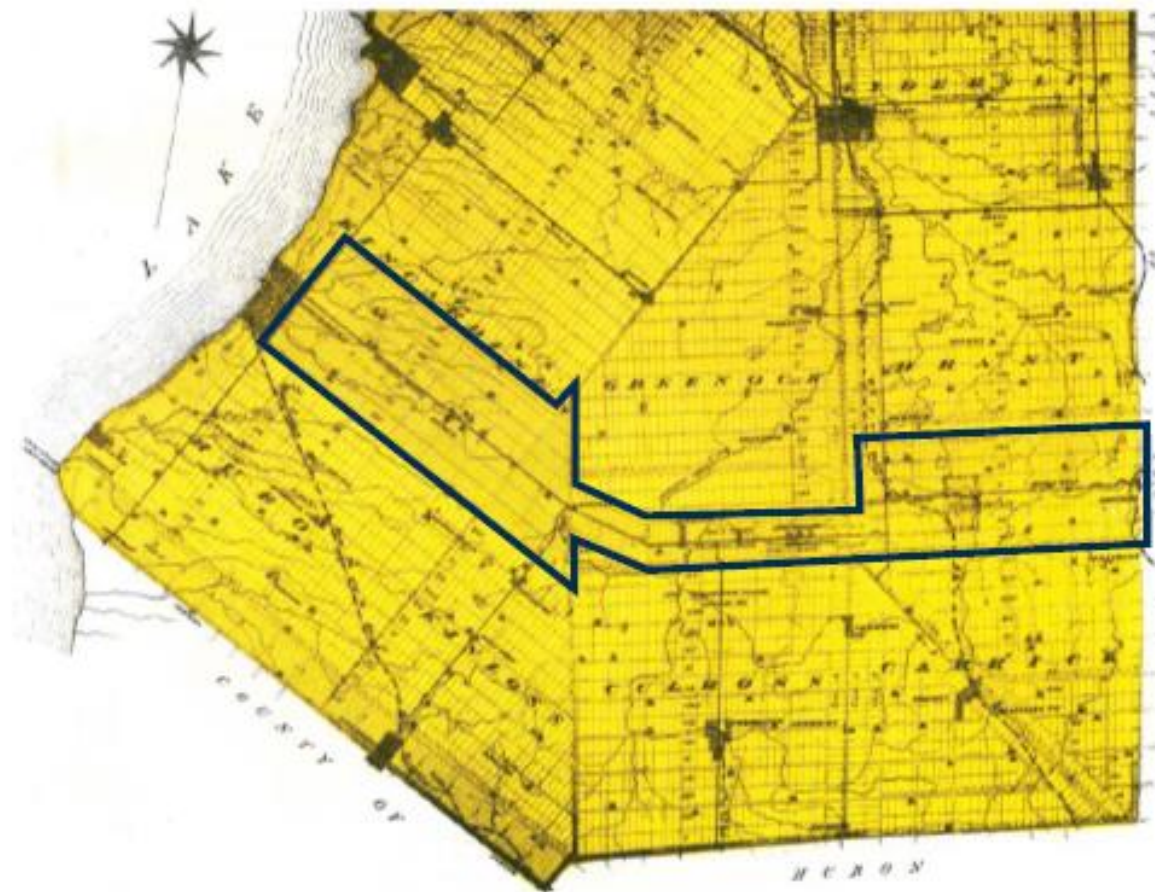
Rural Areas are areas where areas that are mainly for farming but are not considered to be Prime Agricultural due to the characteristics of the land, limitations caused by incompatible land uses, or both. There is more flexibility than in the Agriculture designation to consider other land uses.



MINIMUM SIZE FOR NEW AGRICULTURAL LOTS

- No change to baseline minimum size for new farm lots (100 acres in Agricultural, 50 acres in Rural).
- More policy detail to support proposed smaller lots.
- Special Policy Area that allows 50-acre farm lots in the original 50-acre survey area (centred on Hwy 9).

Bruce County Historical Atlas with original 50-acre Survey area bounded in blue





SURPLUS FARM DWELLING SEVERANCES

- Consider trade-offs between irregular vs rectangular lot shapes
- Consider removing bona fide farmer owner requirement for more applicant flexibility

Irregular Lot - approximately 1.0 ha



Rectangular Lot - approximately 2.0 ha





NEW RESIDENTIAL LOTS IN WOODLOTS

- Consider continuing to allow new residential lots in woodlots in the Rural Area
- Review population decline with Hamlet growth in Plan the Bruce: Good Growth



INDUSTRIAL AND COMMERCIAL USES ON FARMS



- Broaden permitted uses to reflect more flexible Provincial policy and guidelines
- Develop made-in-Bruce Agricultural System policy.



CANNABIS PRODUCTION

- Develop policies to address directing facilities to agricultural and rural or industrial locations.



URBAN-AGRICULTURE EDGE PLANNING

- Identify specific areas with urban-agricultural edge issues and opportunities
- Investigate potential to implement Farm Enterprise Zones
- Investigate benefits of Community Planning Permit system for edge planning.

A collage of fresh produce. In the top left, there are carrots and green peppers. The center features several baskets of purple and white potatoes. The bottom right shows more potatoes in a basket labeled 'FRUITS DE L'ONTARIO'. A semi-transparent dark blue rectangle is overlaid in the center, containing white text.

GET INVOLVED. GIVE YOUR INPUT.
HELP PLAN THE BRUCE

Plan the Bruce: Agriculture



Ensuring the Future of Food Thrives Here

Agriculture plays an important role in Bruce County's economy and rural identity. That said, protecting farmland and promoting farm business opportunities is a challenge for the future.

If we plan successfully, Bruce County will be a place where future generations of farmers continue to prosper. Our natural assets are finite, non-renewable resources and our agricultural lands are the foundation for food, fibre, the local food economy, agri-food exports and economic prosperity.



STAY INFORMED

Subscribe for project updates

SUBSCRIBE

19 members of your community are following this project

Agriculture Project Team

Mark Paoli

Director, Planning and
Development
Bruce County



Email planthebruce@brucecounty.on.ca

Give Input on How We Plan for Agriculture in Bruce County

If we plan successfully, Bruce County will be a place where future generations of farmers continue to prosper. Give your input and help plan for the health of agriculture in Bruce County.

Good planning decisions now will help us support local food producers and expand their opportunities beyond our borders to create markets for a thriving, healthy agricultural community.

[TAKE SURVEY](#)



Rural Landowner Survey

If you're a rural landowner in Bruce County, give your input and help plan for the health of agriculture in Bruce County.

[TAKE SURVEY](#)



[? What is a Prime Agricultural Area?](#)

Documents

[Guide to Giving Feedback \(1.89 MB\) \(pdf\)](#)

[A Snapshot of Agriculture in Bruce County \(118 KB\) \(pdf\)](#)

[Plan the Bruce: Agriculture Interim Report \(5.55 MB\) \(pdf\)](#)

[Stakeholder Workbook \(16.7 MB\) \(pdf\)](#)

Maps

[Bruce County Proposed Prime and Potential Prime Agricultural Areas Map.pdf \(3.3 MB\) \(pdf\)](#)

[More...](#)

Next steps

- Municipal feedback, via stakeholder workbook
- Finalize Discussion Paper
- Official Plan project to begin summer 2021
- Adopt new Official Plan in 2022



planthebruce.ca