



Municipality of Brockton

Total Cost to carry out this work as proposed:

Option 1 (Without LED Screen) \$ 15,398.00
(Price to exclude taxes)

Option 2 (With LED Screen) \$ 26,122.00
(Price to exclude taxes)

Estimated Project Completion Date: Aug 31 2020

Subcontractors (if any) _____

Name of Bidder: Cox Signs Limited

Address of Bidder: 27 Ontario Road, Walkerton, ON

Signature: _____

Title: President

Date: June 4 2020

CUSTOMER:

Prepared by:

Municipality of Brockton

Att: Paulette

Tel:

Eml:

Cell:

Brian Grubb / Ron Cox

Walkerton, ON



ITEM #	DESCRIPTION	QTY	UNIT PRICE	TOTAL
Option 1 - WALKERTON INDUSTRIAL PARK SIGN				
Illuminated	<p>ILLUMINATED SIGN: New Doubled illuminated sign for Walkerton Industrial Park. / Illuminated sign cabinet & facial molding fabricated from anodized aluminum. / Signs back lite with low power LED Illumination. / Sign Faces: 2x 3/16" white acrylic plastic 8" x 8'. To be blank sign faces with no graphics. Sign Face panels to removable for easy changing of graphics. / Sign Faces: 2x 3/16" white acrylic plastic 2" x 8'. Face with translucent vinyl graphics. "Walkerton Industrial Park"</p> <p>Illuminated signs backlit with low voltage LED modules and power supplies. Advantages, lower power consumption, can be up to a 35 to 80% in energy savings. No lamps to change, and a long term savings on labour and glass lamp disposal.</p> <p>Illuminated Sign 10' h x 8' w / Double Sided / LED illumination</p>	1	7,998.00	7,998.00
Existing	Existing: Remove existing sign structure and dispose of.	1	390.00	390.00
ESA	ELECTRICAL INSPECTION: Electrical components conform to CSA or UL certification with a final inspection by the Ontario Electrical Safety Authority	1	96.00	96.00
Sensor	Dusk to Dawn Sensor:	1	68.00	68.00
Posts	POSTS: 1x steel post 8" x 8" x 18' 6" primed painted and finished with anchor bolt and base plate. Electrical connection access hole. / Steel brackets for Illuminated cabinet.	1	2,248.00	2,248.00
Base	BASE: Cut existing concrete. New concrete base on location. Note new base will need to be offset from existing concrete base.	1	1,398.00	1,398.00
Base	EXCAVATION: Hydro excavation	1	580.00	580.00
Installation	INSTALLATION: Installation of illuminated sign cabinet and sign face on location	1	1,290.00	1,290.00
Crane	CRANE RENTAL:	1	650.00	650.00
Manlift	MANLIFT Rental:	1	680.00	680.00
Electrical	ELECTRICAL HOOK UP and power wire from building to sign.....SUPPLIED BY CUSTOMER	0	Not Included	
Permit	Sign PermitSUPPLIED BY CUSTOMER	0	Not Included	
Engineer Stamp	Engineer Stamped Drawing: If required for permit is Extra Cost	0	Not Included	
		SUBTOTAL		\$ 15,398.00
OPTIONAL	OPTIONAL SKIRTING: Aluminum clad around base of post	1	345.00	345.00
OPTIONAL	Tenant Graphics: Not Included in Cost	0		
			HST Extra	
			TOTAL	

CUSTOMER:

Prepared by:

Municipality of Brockton

Att: Paulette

Walkerton, ON

Tel:

Eml:

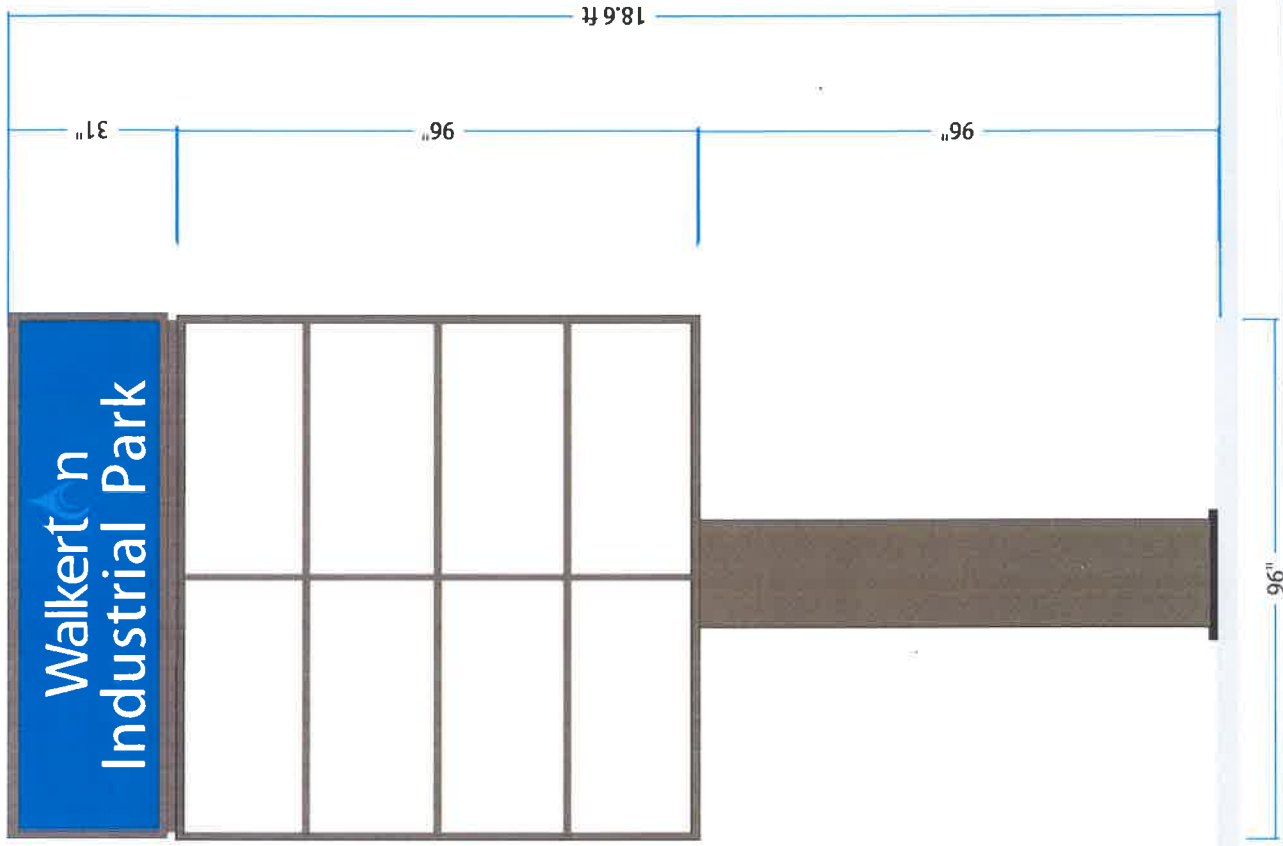
Cell:

Brian Grubb / Ron Cox

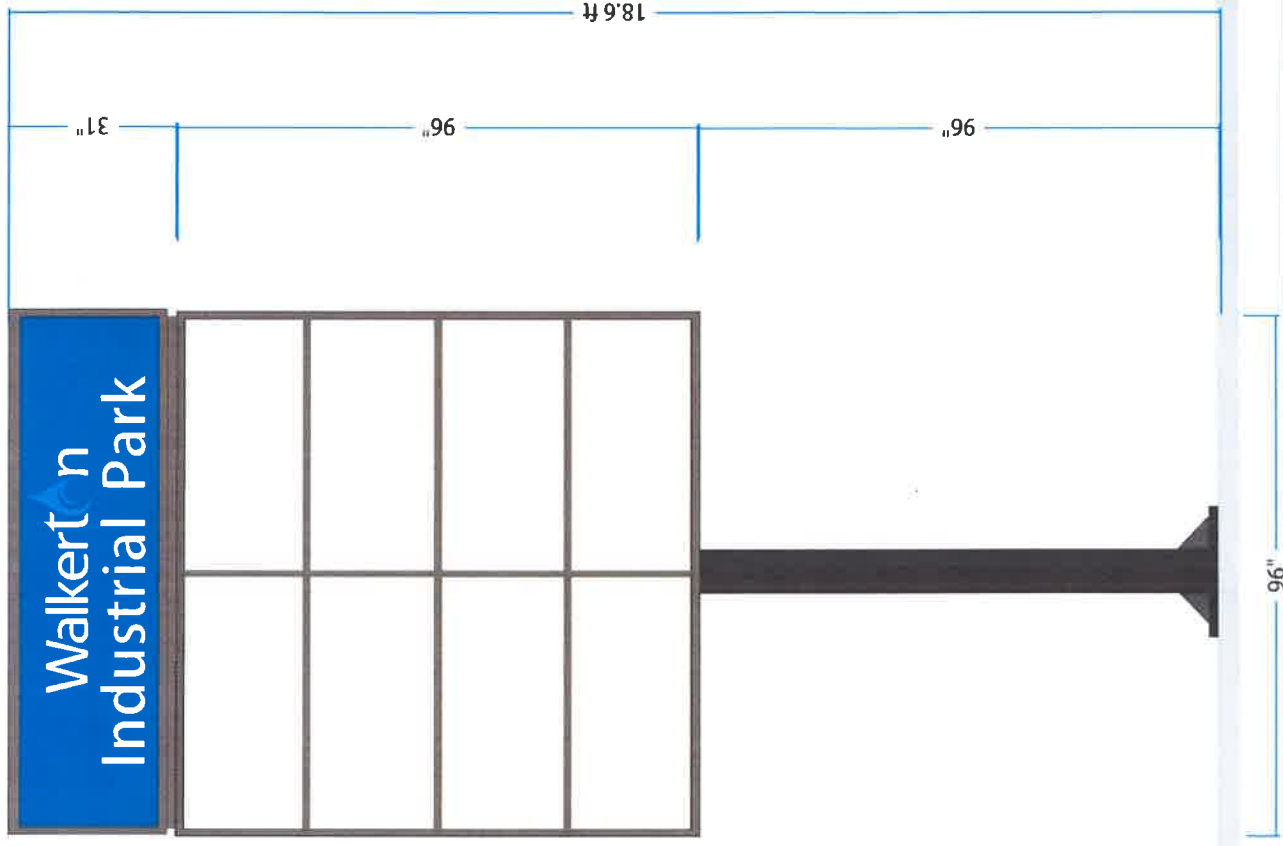


ITEM #	DESCRIPTION	QTY	UNIT PRICE	TOTAL
Option 2 - WALKERTON INDUSTRIAL PARK SIGN				
Illuminated	<p>ILLUMINATED SIGN: New Doubled illuminated sign for Walkerton Industrial Park. / Illuminated sign cabinet & facial molding fabricated from anodized aluminum. / Signs back lite with low power LED Illumination. / Sign Faces: 2x 3/16" white acrylic plastic 8" x 8'. To be blank sign faces with no graphics. Sign Face panels to removable for easy changing of graphics. / Sign Faces: 2x 3/16" white acrylic plastic 2" x 8'. Face with translucent vinyl graphics. "Walkerton Industrial Park"</p> <p>Illuminated signs backlit with low voltage LED modules and power supplies. Advantages, lower power consumption, can be up to a 35 to 80% in energy savings. No lamps to change, and a long term savings on labour and glass lamp disposal.</p> <p>Illuminated Sign 10' h x 8' w / Double Sided / LED illumination</p>	1	7,998.00	7,998.00
Existing	Existing: Remove existing sign structure and dispose of.	1	390.00	390.00
ESA	ELECTRICAL INSPECTION: Electrical components conform to CSA or UL certification with a final inspection by the Ontario Electrical Safety Authority	1	96.00	96.00
Sensor	Dusk to Dawn Sensor:	1	68.00	68.00
Posts	POSTS: 1x steel post 8" x 8" x 20' primed painted and finished with anchor bolt and base plate. Electrical connection access hole. / Steel brackets for Illuminated cabinet.	1	2,448.00	2,448.00
Base	BASE: Cut existing concrete. New concrete base on location. Note new base will need to be offset from existing concrete base.	1	1,398.00	1,398.00
Base	EXCAVATION: Hydro excavation	1	580.00	580.00
Installation	INSTALLATION: Installation of illuminated sign cabinet and sign face on location	1	1,290.00	1,290.00
Crane	CRANE RENTAL:	1	650.00	650.00
Manlift	MANLIFT Rental:	1	680.00	680.00
Electrical	ELECTRICAL HOOK UP and power wire from building to sign..... SUPPLIED BY CUSTOMER	0	Not Included	
Permit	Sign Permit SUPPLIED BY CUSTOMER	0	Not Included	
Engineer Stamp	Engineer Stamped Drawing: If required for permit is Extra Cost	0	Not Included	
			SUBTOTAL	\$ 15,598.00
OPTIONAL	Tenant Graphics: Not Included in Cost	0		
LED Display: Option 2-A or 2-B Pixel Pitch: Pixel Matrix:	<p>DESCRIPTION: Colour: RGB Full Colour / Can display in full colour text, graphics, graphic animation, photos and video images</p> <p>Pixel Pitch: P7 High Resolution Modules: SMD type</p> <p>Pixel Matrix: 80 x 320 = 25,600 pixels per LED screen</p> <p>Viewing Area: 2'x8' or 4'x4' Display Size: 2'x8' or 4'x4'</p>	2	5,262.00	10,524.00

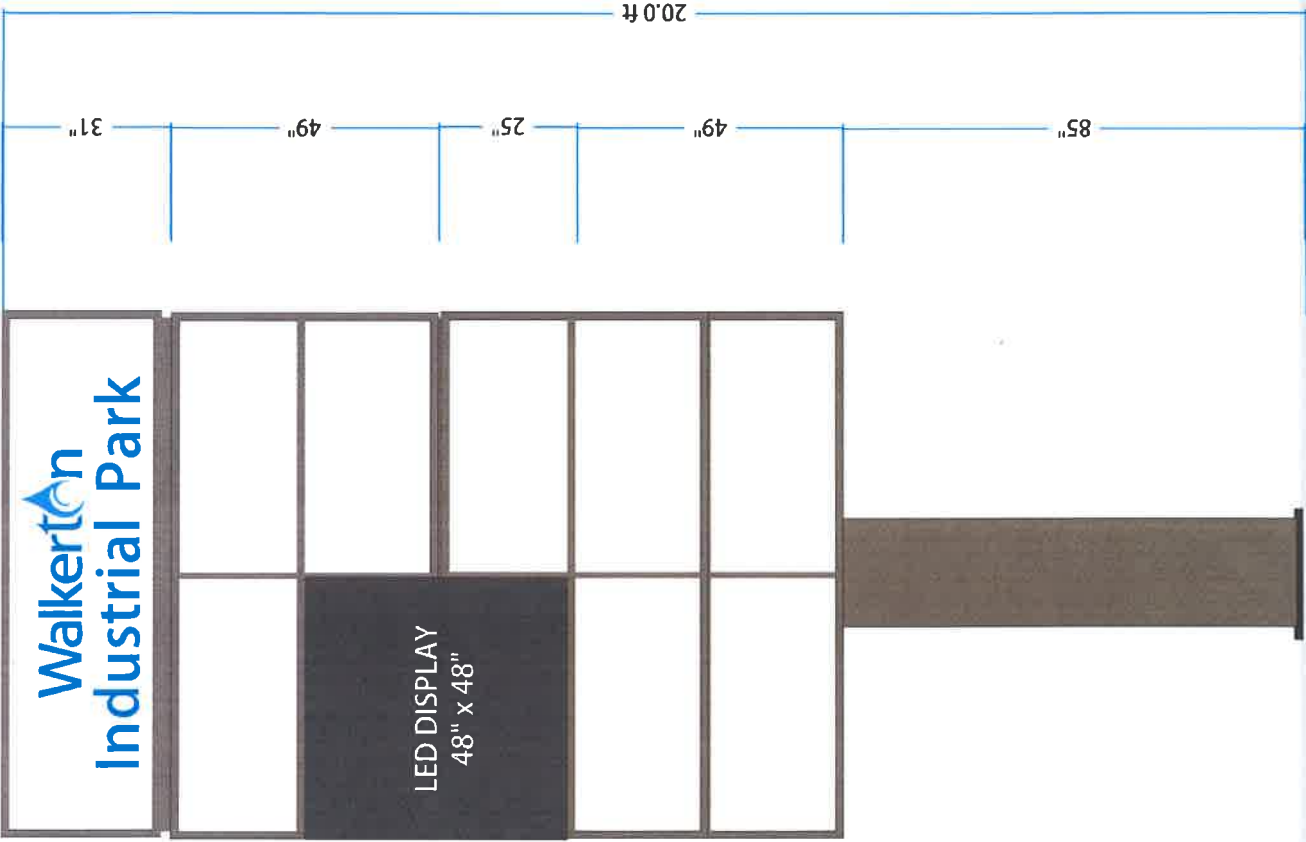
<p>Sensor</p> <p>Software:</p> <p>Communication:</p> <p>Warranty</p>	<p>Aluminum Cabinet Front Servicing</p> <p>Led Modules: 100,000 hours Brightness: 6,500 nits</p> <p>Light Sensor: Daylight / Nighttime Sensor. Controls brightness of display</p> <p>Software: Taurus T3 Asynchronous Control System</p> <p>Communication: To be Determined / Included T3 WiFi hub</p> <p>WARRANTY - 3 Year Warrenty on LED Display</p> <p>1x Master / 1x Slave</p>	1	INC	-
		1	INC	-
		0	-	-
			TOTAL	\$ 26,122.00
OPTIONAL	OPTIONAL SKIRTING: Aluminum clad around base of post	1	345.00	345.00
			HST Extra	
			TOTAL	



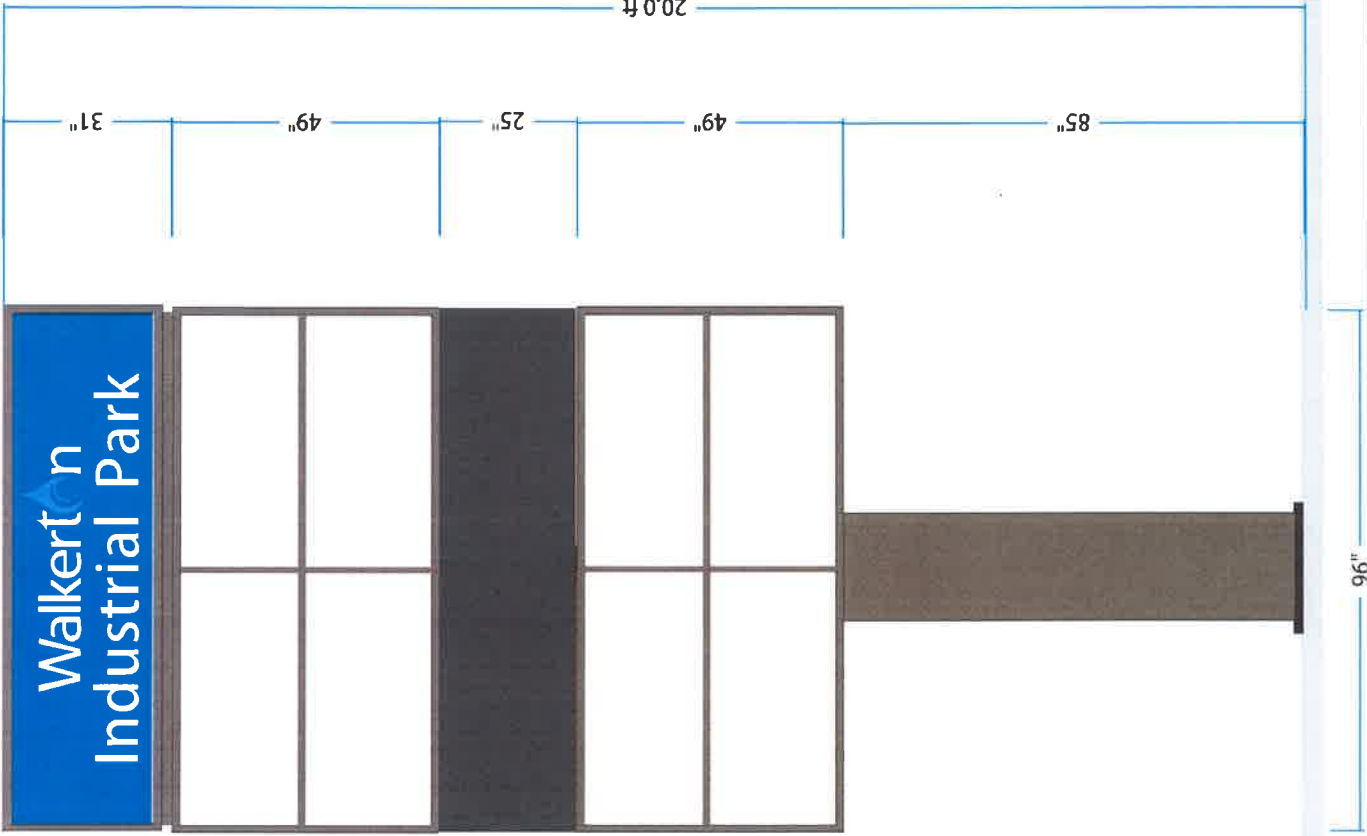
OPTION 1



OPTION 1 - Without Optional Skirting



OPTION 2-A



OPTION 2-B



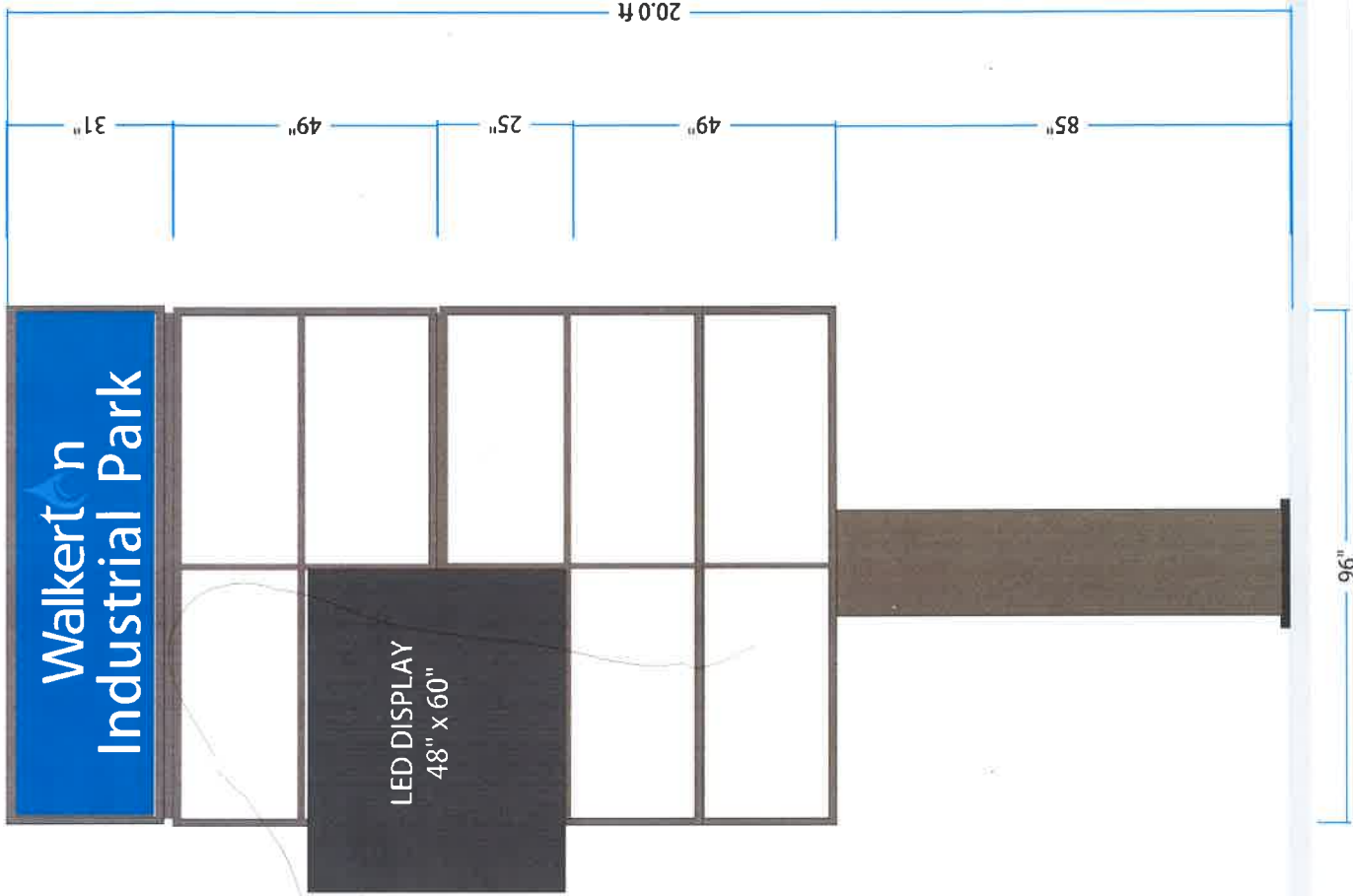
Drawing No.
369

No portion of this drawing may be copied or reproduced in whole or in part by any means without the written permission of Cox Signs Limited. Legal action will be taken if reproduced without permission.

WALKERTON ON
27 Ontario Road,
Tel: 888.953.1111
Fax: 519.881.1461

STRATFORD ON
291 Lorne Ave.,
Tel: 519.272.0333
Fax: 519.272.2514





OPTION 2-C



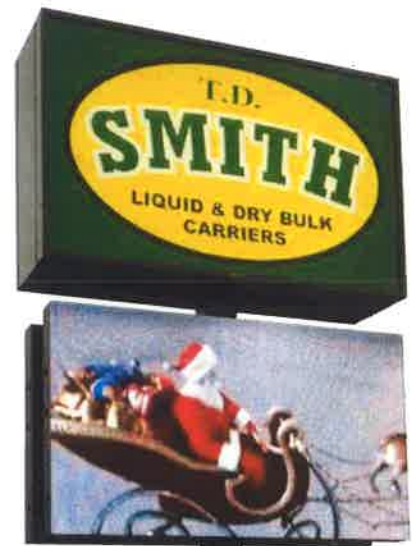
Drawing No.
369

No portion of this drawing may be copied or reproduced in whole or in part by any means without the written permission of Cox Signs Limited. Legal action will be taken if reproduced without permission.

WALKERTON ON
27 Ontario Road
Tel: 888.953.1111
Fax: 519.881.1461

STRATFORD ON
291 Lorne Ave.
Tel: 519.272.0333
Fax: 519.272.2314





Advanced Control Software

Asynchronous and Synchronous Control Systems available

- Brightness Sensor
- Optional Temp Sensor
- Extremely Flat / High Uniformity
- Wide Viewing Angle

Waterproof / Dustproof Cabinet

Frameless Cabinet Design

Fully Sealed Modules

Front Servicing Modules

All Types of Communication
Direct Wire
Wireless wifi
Cloud Based
Cellular

Fan Ventilated System

Aluminum Cabinet
Less weight than steel. Structural strong fabrication

Optional Rear Servicing Door (Special Order)