

The Corporation of the Municipality of Brockton



By-Law 2020-035

Being a By-Law to Authorize the Signing of an Agreement With Brandt Tractor for the Purpose of Purchasing Two 2020 Handy Hitch Profile Packers.

Whereas The Council for the Corporation of the Municipality of Brockton deems it expedient to enter into an Agreement with Brandt Tractor for the purchase of two (2) 2020 Hand Hitch Profile packers;

Now Therefore the Council of the Corporation of the Municipality of Brockton enacts as follows;

- 1.0 That The Corporation of the Municipality of Brockton Council hereby enter into an Agreement with Brandt Tractor which is attached as "Schedule A" for the purchase of two (2) 2020 Handy Hitch Profile Packers in the amount of \$33,979.50 each, plus H.S.T.
- 2.0 The Mayor and Clerk are hereby authorized to sign any other documents required to purchase the equipment.
- 3.0 This By-Law shall come into full force and effect upon final passage.
- 4.0 This By-Law may be cited as the "Brandt Tractor Purchasing Agreement By-Law".

Read, Enacted, Signed and Sealed this 19th day of March, 2020.

Mayor – Chris Peabody

Clerk – Fiona Hamilton



Handy Hitch Packer

Municipality of Brockton

John Strader

Hello John,

From Day One, we've helped our customers succeed by offering them two things: the right products and the right people.

Brandt Tractor Ltd. is the world's largest privately held John Deere Construction and Forestry Dealer; proud to offer a complete line of dependable, hard-working Deere equipment, from skid steers, dozers and excavators to backhoes, wheel loader and much more, PLUS complete sales and service for Ditch Witch, NPK, Hammerhead and Topcon.

We also have the right people; a dedicated team that delivers powerful value to our customers each and every day from our 56 Brandt Tractor branches across Canada. It's comprehensive support you can count on.

2020 Handy Hitch Profile Packer	Quauntity 2	Subtotal:	\$67,595.00
Serial Number: TBD		HST:	\$8,787.35
4-6 week lead time			
		Total:	\$76,382.35

Above quotation includes the following:

- Two Handy Hitch Profile Packers
- Delivery to Brockton Public works yard
- Installation Completed by Brandt Tractor
- All preparation work required on John Deere motor graders



90" Profile Packer/Roller Bid Specifications

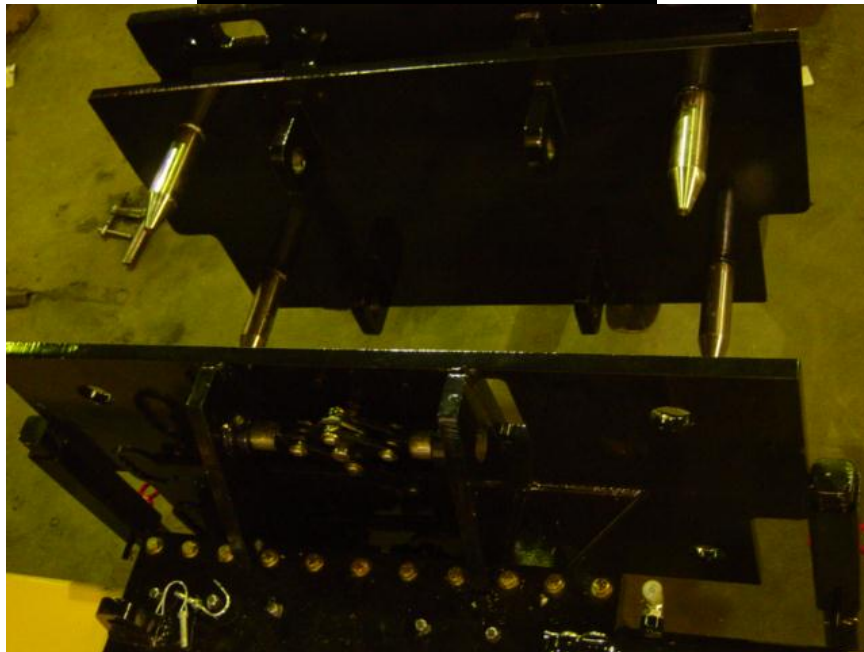


- Main frame 10" X 6" Three heavy-duty independent hydraulic arms that pivot on 2" Hardened steel pins, with 5" of bushings allowing for 72 degrees of travel in the raise and lower arc. Fully raised ground clearance 18"
- Three heavy-duty independent walking beams that pivot on hardened 2" steel pins, with 5" of bushings allowing for 12 degrees of travel from front to rear of the frame.
- Twelve easy access 750 x 15 14-ply smooth roller tires, heavy-duty inner tubes mounted on industrial duty rims.
- Three individual 6000lb double hubs & spindles.
- Six individual axle-retaining plates for easy tire replacement.
- Three easy to reach grease zerks.
- Four self contained jack stands for easy to connect or disconnect from the ripper or lift assembly.

Walking Beams



Quick Attach System Option



Standard 24" Packer Offset



- The packer offset is bolted into place on the main 6" x 10" mainframe. The slide assembly is lined with 3/8" Thk lubricant impregnated nylon bearing plates. This allows the Profile Packer to be offset from the grader 24" to the left or right of the grader this allows for safe compaction of road shoulders.
- 4" x 24" 3000 psi Hydraulic cylinder C/W 4000psi hoses.
- 3/4" plate main slide assembly frame.
- 1/4" UHMW lubricant impregnated nylon bearing plates.
- 2 sets of hydraulic cylinder tabs allowing you to offset 24" to the right or left of the grader.
- Weight C/W 24" packer offset & grader adaptor plate 3,950lb
- Standard Accumulator and Adjustable Pressure Relief valve

SPECIFICATIONS

	75"	90"	120"
Overall Frame Width	96"	96"	128"
Packing Width	75"	90"	120"
Overall Length	95"	95"	95"
Overall Height	44"	44"	44"
Weight (Approx.)	3500lbs	3900lbs	5200lbs

- 6000lbs hub & spindles
- 14 ply smooth roller tires c/w heavy duty rim
- 10" 3000PSI hydraulic cylinders
- Standard Accumulator System