

Compassionate end - of - life care

CLOSER TO HOME



A Place for All of Us...

*G.M. DIEMERT ARCHITECT INC.*



75% of Canadians want to die at home, ONLY 15% DO.

# of Deaths in Grey Bruce  
annualized based on  
2022-2023 data:

1,779

Impacting 8,895  
individuals

Today in Grey-Bruce  
**12** Active Hospice  
Residence Beds  
( Population 174,300)

Aging Population  
Projected Population in  
Ontario Health West  
over age of 65 in 10 years:  
35 %

Caregiver Burnout  
is on the rise

\*Based on a 2024 Ontario Health West needs analysis: Grey Bruce needs 18 Hospice Residence Beds



Our Mission:

In partnership with our communities and the Ministry of Health, the Board's mission is to plan, design, build and operate a 6-bed hospice residence that brings compassionate end-of-life care - Closer to Home

# What is a Hospice Residence?



A hospice is a warm and welcoming place where individuals with life-limiting illnesses receive compassionate care and support in a home-like environment where residents can live their final days with dignity and comfort.



Hospice care focuses on enhancing the quality of life, managing pain and symptoms, and providing emotional and spiritual support to both residents and their families.



The dedicated staff and volunteers at hospice residences are committed to making every moment meaningful, ensuring that residents feel valued and loved.

Hospice services typically include:

- 24/7 nursing and personal support care
- Medical Care
- Pain and symptom management
- Emotional and spiritual support
- Bereavement support for residents and families
- Volunteer services
- Recreational and therapeutic activities



Future Home Of



saugeenhospice.ca 519-901-7071

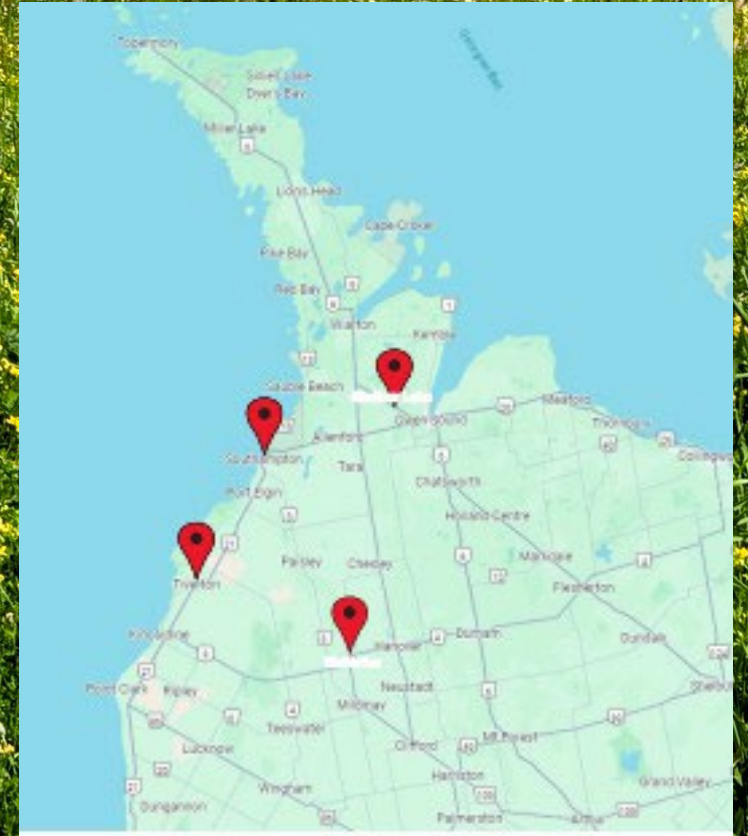
Not-for-profit community corporation, incorporated in 2021

Building a free-standing hospice residence in southern Bruce County. The plan is to construct a 6-bed hospice in Eastridge Park, Walkerton, Ontario.

Serving South Bruce, Brockton, southern Arran-Elderslie, Hanover, West Grey, Minto, and surrounding areas.

The Municipality of Brockton generously donated this land to Saugeen Hospice Inc.

Saugeen Hospice is anticipating welcoming their first resident, summer 2028.



# Cost to Build Saugeen Hospice

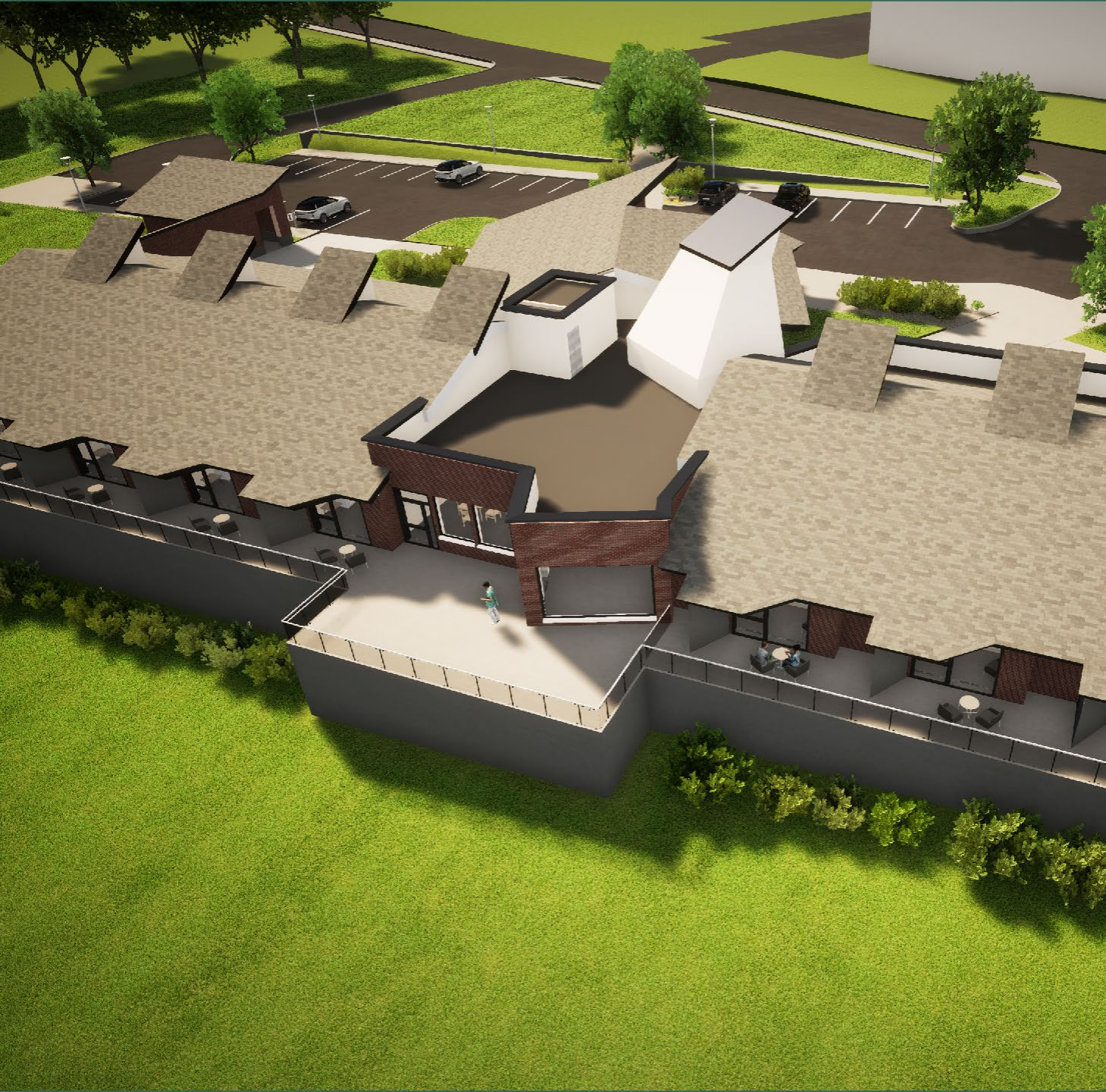
Capital Fundraising Campaign Goal

\$10,000,000 \*

Donations & Pledges to Date \$7,000,000



\*The final estimate of the cost to build will be finalized just before the start of construction



The Saugeen Hospice Board envisions the Saugeen Hospice Residence as truly a regional resource — built by, supported by, and accessible to the residents of every county and municipality in our area.

We believe that compassionate, end-of-life care should be a shared commitment, uniting local governments, businesses, religious institutions, community organizations, and residents in a common purpose.

By bringing all counties and municipalities to the table, we ensure that Saugeen Hospice reflects the collective values, needs, and strengths of our entire region — and stands as a testament to what we can achieve together.

Together, we can build a space that reflects the heart of our region.

Let's make this a place where every municipality sees itself—and its people—reflected.



Phone:

Office: 519-901-7011

Email:

[askus@saugeenhospice.ca](mailto:askus@saugeenhospice.ca)

Mailing Address:

Saugeen Hospice

P.O. Box 20173

Hanover, ON N4N 3T1

Office Address:

Saugeen Hospice

7 Victoria Street, South

Walkerton, ON N0G 2V0