

DRINKING WATER SOURCE PROTECTION

ACT FOR CLEAN WATER



Grey Sauble
CONSERVATION



Drinking Water Source Protection Carl Seider

September 10, 2024

MUNICIPALITY OF BROCKTON COUNCIL

Septic Systems – Proposed Changes

- ▶ Expand requirements for discretionary septic inspection program to WHPA-E areas around Lake Rosalind
- ▶ Municipality/Risk Management Official work together to prioritize discretionary inspections in areas where septic systems are known to fail and where older septic systems are predominant
- ▶ Require motion of endorsement from municipal Council and approval by Ministry of Environment, Conservation and Parks (MECP) of proposed changes before Source Protection Plan amendments can be made

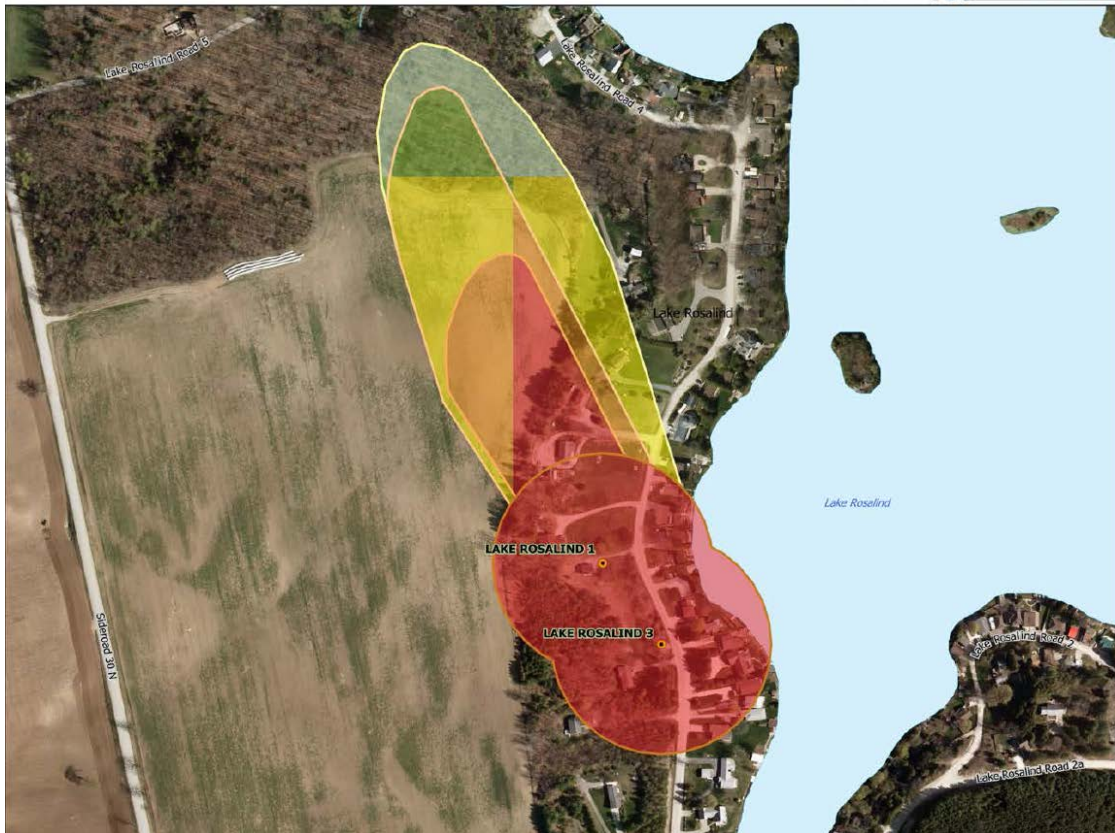


Lake Rosalind Wellhead Protection Areas

Wellhead Protection Area-E

- Pathogen Threats and Discretionary Septic Inspections

MAP 5.1.B.LR.1 LAKE ROSALIND DRINKING WATER SYSTEM WHPA
Approved Source Protection Plan



MAP 5.1.B.LR.2 LAKE ROSALIND DRINKING WATER SYSTEM WHPA-E
Approved Source Protection Plan



Consultation Efforts

- ▶ Initial consultation with Council and residents started in early 2023
- ▶ Pre-consultation with MECP and affected landowners, with letters to individual properties sent out in June 2024. No negative comments received from residents or other agencies.
- ▶ Public Consultation phase to be completed in September 2024
- ▶ Planned final submission to MECP in November, along with endorsement resolutions from affected Municipalities

Recommended Resolution

- ▶ THAT the Council of the Municipality of Brockton pass a resolution in support of the proposed septic policy change for the Lake Rosalind Wellhead Protection Area;
- ▶ AND FURTHER THAT the Council of the Municipality of Brockton directs staff to forward the resolution to the Saugeen Valley, Grey Sauble, Northern Bruce Peninsula Source Protection Region.

Questions

- ▶ Carl Seider, Program Manager
- ▶ 519-470-3000
- ▶ c.seider@waterprotection.ca