



Saugeen Valley Conservation Authority

Programs and Services

Jennifer Stephens

General Manager/Secretary-Treasurer

January 10th, 2023

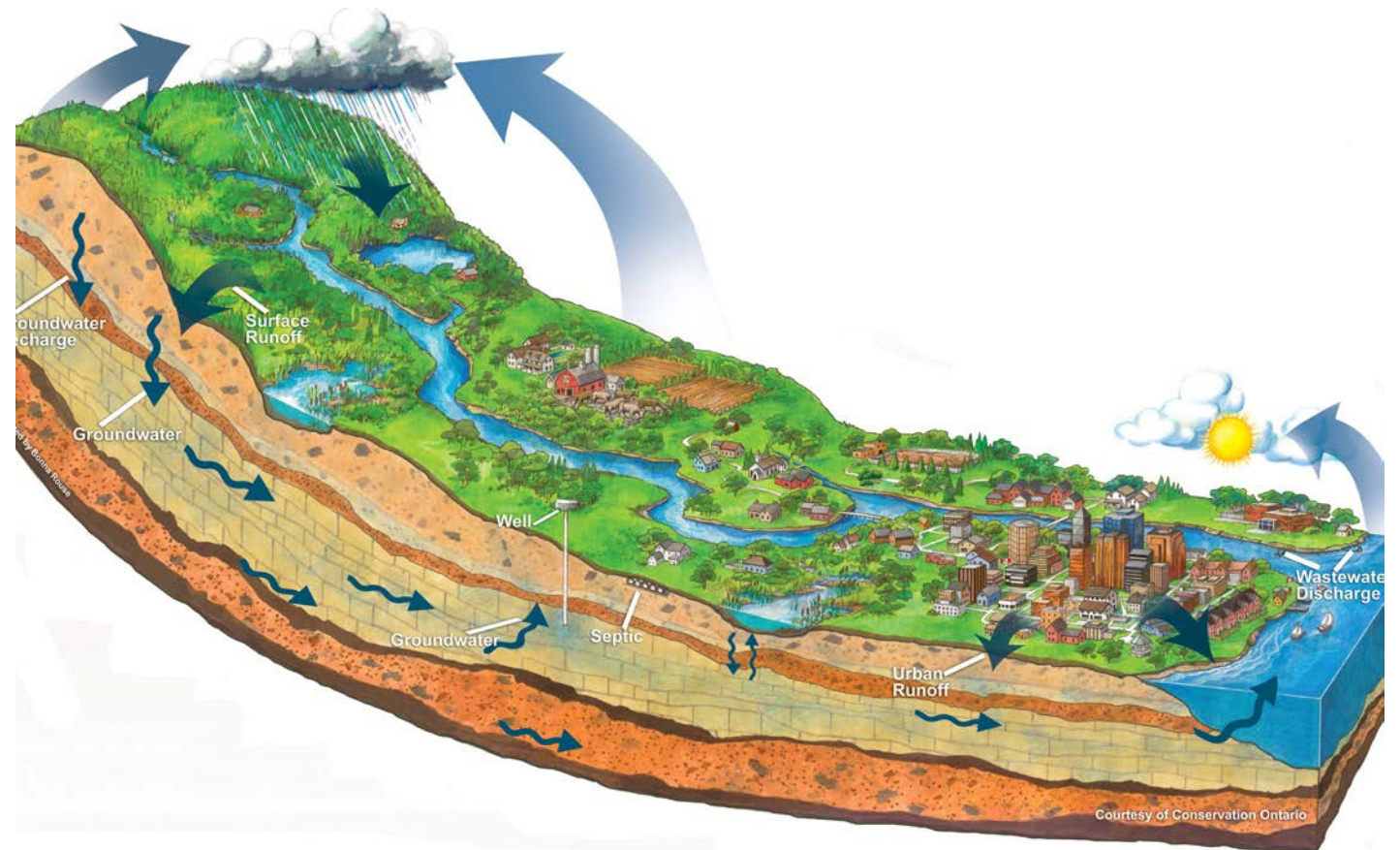


We are one of 36 Conservation Authorities across Ontario under the umbrella organization of Conservation Ontario.

What is a Watershed?

Water flows Downstream...

- A watershed is simply a catchment area.
- When rain falls, it either infiltrates, evaporates, or runs off.
- What happens on your property might affect your neighbours and vice-versa.



Natural Hazards Management



Non-Structural Approaches

Keeping people away from water

- Regulation of development in floodplains
- Flood forecasting and warning
- Water infrastructure maintenance and inspection
- Emergency planning



Structural Approaches

Keeping water away from people

- Dams – to control flow of frazil ice and water
- Dykes – to restrict flows to the proper channel
- Channel works – to protect slopes from erosion

Regulation of Development

Plan Input and Review

Planning Act Applications
Development Proposals and
Inquiries

Regulation 169/06

Permits
Enforcement
Development, Proposals, and
Inquiries

Provincially Delegated Responsibility

All CAs have been delegated responsibility under the Provincial One Window Planning System for Natural Hazard management.

CAs have been delegated responsibilities from the MNRF to represent **provincial interests** regarding natural hazards encompassed by Section 3.1 of the Provincial Policy Statement (PPS).

These delegated responsibilities require SVCA to review and provide comments on municipal policy documents (Official Plans and comprehensive zoning by-laws) and development applications.

SVCA's purpose is to ensure municipal policy documents and development applications are consistent with the natural hazard policies of the PPS.



Hurricane Hazel, Toronto 1954

Flood Forecasting and Warning Program

1. To relay routine information concerning watershed river conditions to selected agencies and municipal officials.
2. To provide rapid, advance warning and technical support to concerned officials and to citizens whose lives and properties may be endangered by floodwaters.

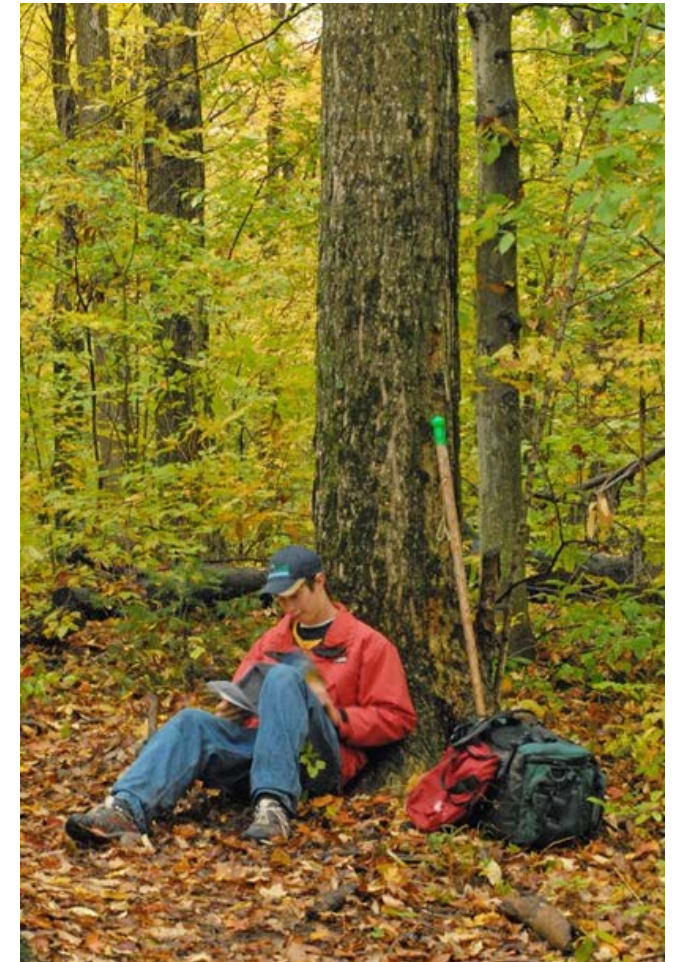


Flood Messages

Normal	Green	
Statement	Yellow	<p>Watershed Conditions Statements / Water Safety are issued when general watershed conditions suggest high runoff potential that could lead to flooding and to remind the public that rivers, streams, and ponds may be unsafe for recreational or other activities.</p> <p>High flows, unsafe banks, melting ice or other factors that may result in watercourses being too dangerous for recreational users or the general public.</p>
Flood Watch	Orange	<p>Flood Watch messages are issued when the potential for generalized flooding exists throughout the watershed or identified for specific municipalities.</p>
Warning	Red	<p>Flood Warning messages are issued when flooding is occurring or about to occur. It typically applies to a specific area of the watershed.</p>

Land Conservation

- 153 different properties in 86 groupings
- 54 km of maintained recreational trails, 129 km in total
- Planning and design of maintenance or improvement projects related to Authority properties and structures

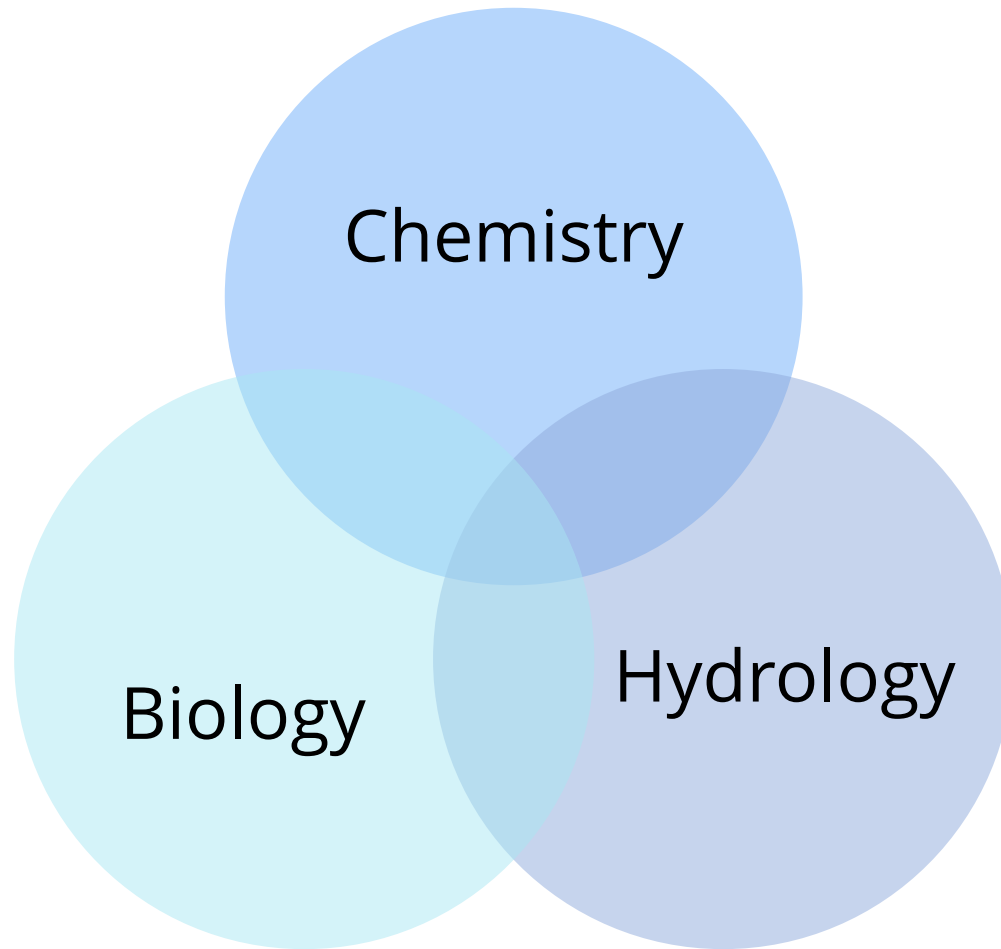


Drinking Water Source Protection

- Source protection is the first line of defense to protecting our drinking water
- Ensure communities are taking appropriate measures to protect municipal drinking water
- SVCA has a responsibility to help protect municipal sources of drinking water
- 153 Risk Management Plans are currently in place throughout the Source Protection Region
- 100% of significant drinking water threat policies have been implemented within the Source Protection Region



Water Quality Program



To establish baseline water quality data;
To observe trends; and
To assess the effectiveness of watershed programs.

Surface Water Monitoring

SVCA takes surface water samples at 29 different stations in an effort to understand the watershed.



Groundwater Monitoring

SVCA performs level and maintenance checks quarterly. Well pump and samples are taken every fall.

There are 23 aquifers accessed at 14 sites.



Forestry

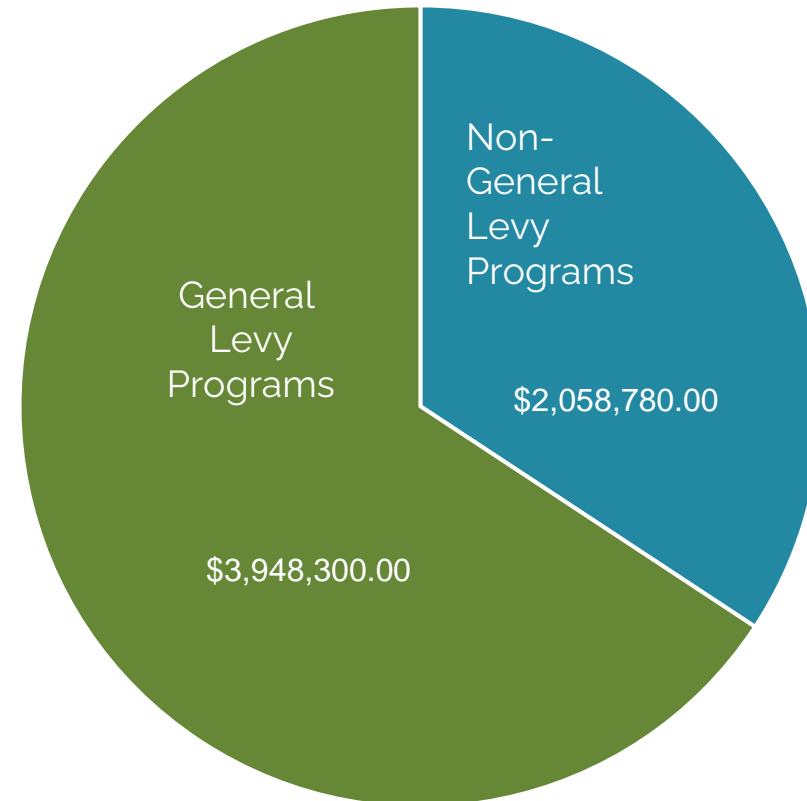
- Tree Planting Program (150,000 trees planted/annually)
- Managed Forest Tax Incentive Program applications for Authority properties and private landowners
- Tree Marking and Tendering Program
- Maintenance and improvement projects related to Authority forested properties (8,000ha)



2023 Budget



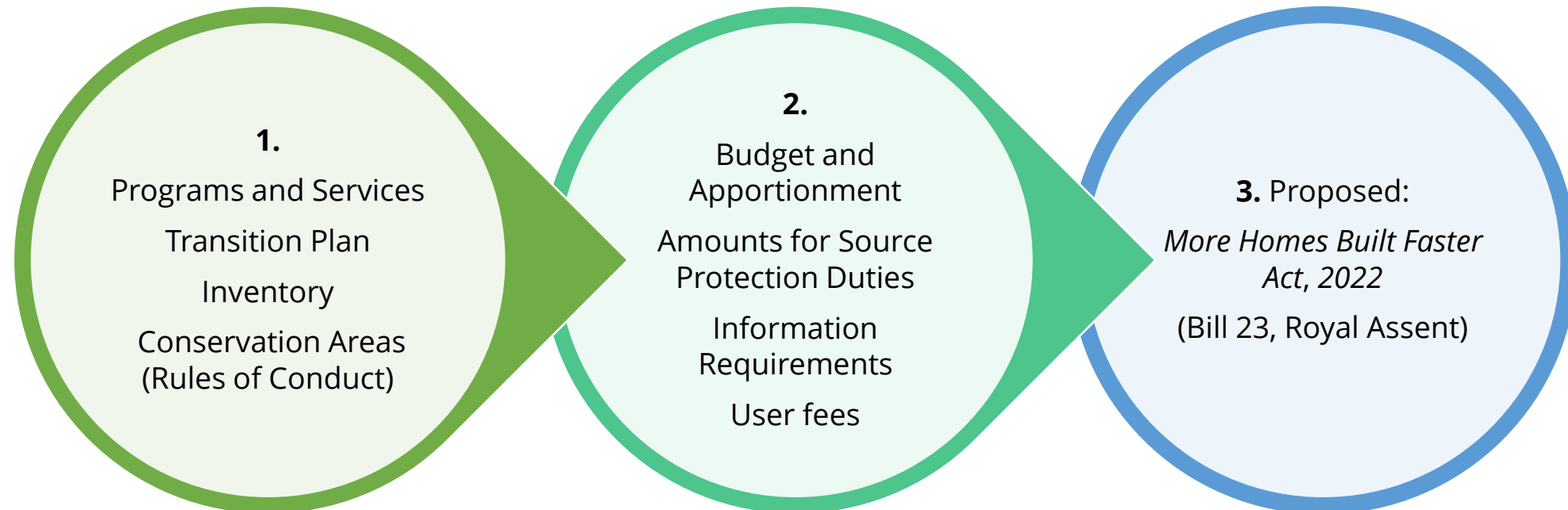
Township of Brockton: \$178,827



Total: \$6,007,080

Conservation Authorities Act

Overview of Related Changes and Proposals from 2021 Onwards



Programs and Services



Category 1: Mandatory programs and services

Category 2: Programs and services a conservation authority does on behalf of municipalities

Category 3: Programs and services that a conservation authority determines are advisable to provide in its jurisdiction

Agreements between municipalities and conservation authorities for Category 2 and 3 Programs and Services must be in place by January 1, 2024.



Thank you!